

City of Carson

Online Mapping Tool Guide

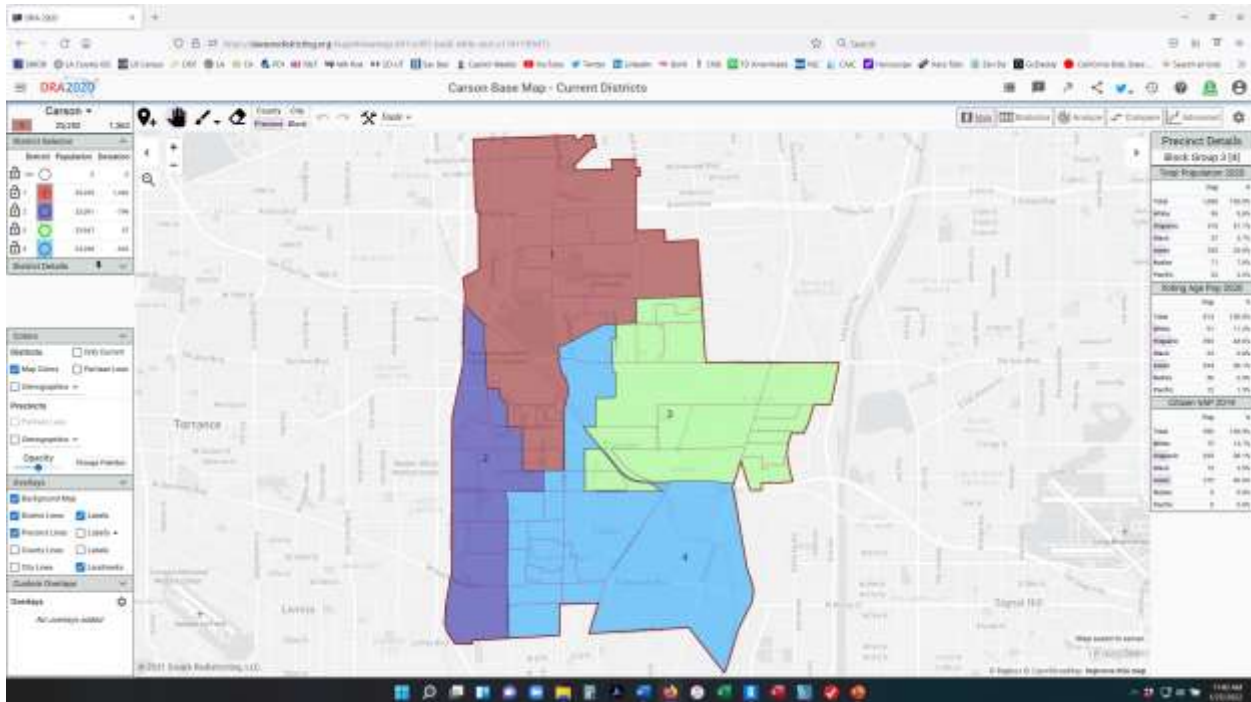
Welcome to the Online Mapping Tool Guide for the City of Carson. The City is using [Dave's Redistricting](#) (DRA 2020) as it's online mapping tool, a free, user-friendly mapping tool to draw new City of Carson City Council Districts. Additional Documentation from DRA 2020 is available after the Getting Started/Introduction Guide. Please contact us at jraymond@carsonca.gov or 310.830.7600 ext. 1318 if you need further information.

Getting Started/Introduction Guide

- 1) Find the Online Mapping Tool on the City of Carson's [Redistricting Page](#).
- 2) Click on one of the blue buttons labeled [Start with a Blank plan](#) or [Start with the Current Districts](#) to go to the Online Mapping Tool.
- 3)

Main Page

- 4) Go to the Top Right of the Page to **Sign Up** or **Log In**.



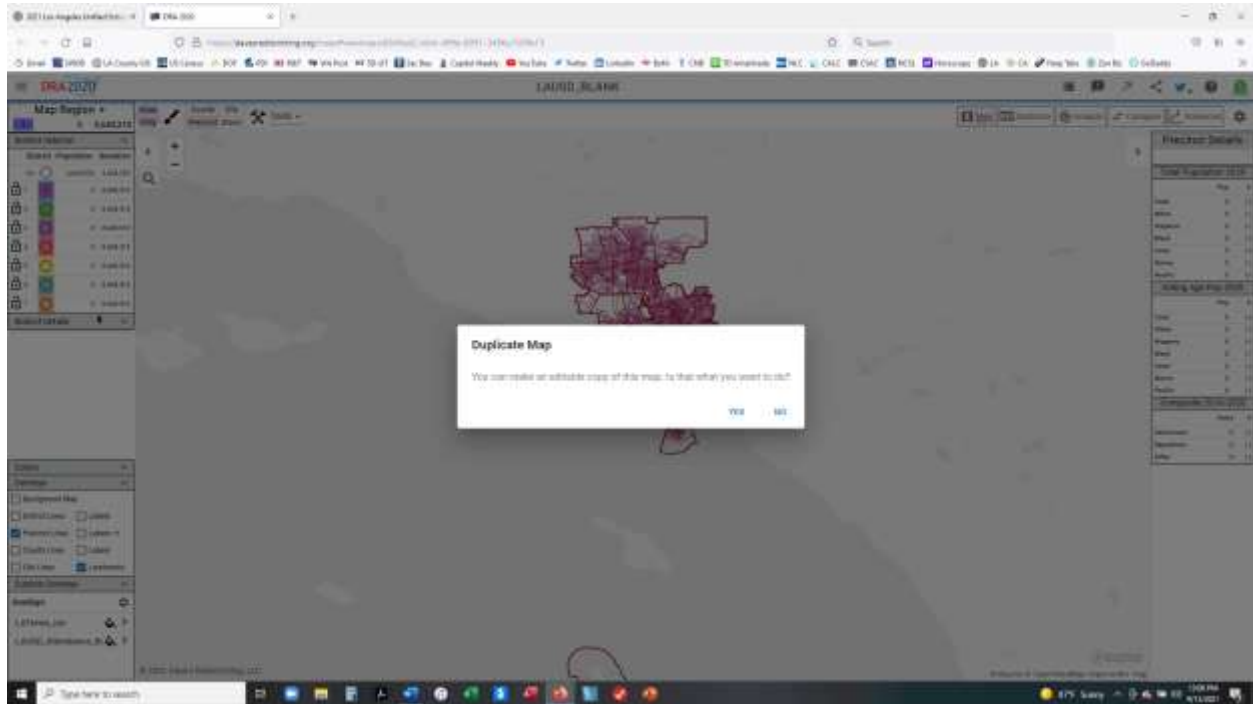
Signup Page

- 5) Sign up by using your email address and create a password. This is all the personal information DRA 2020 needs to create an account for you. If you have already created an account, sign in using your email address and the password you created.



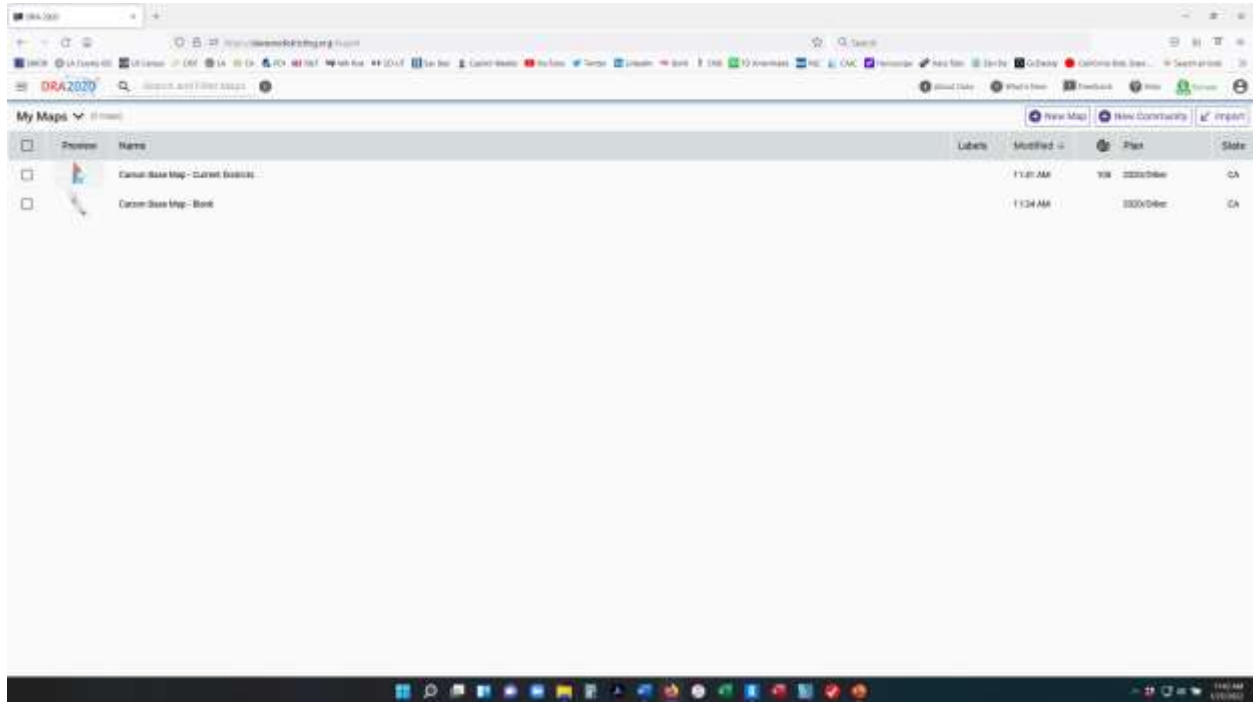
Duplicate the City of Carson Blank map or City of Carson Current Map

- 7) In order to begin creating your own map, you first need to duplicate the existing map using the paint brush tool in the top left corner. Once you select the duplicate map button, press Yes to make a copy for your use.



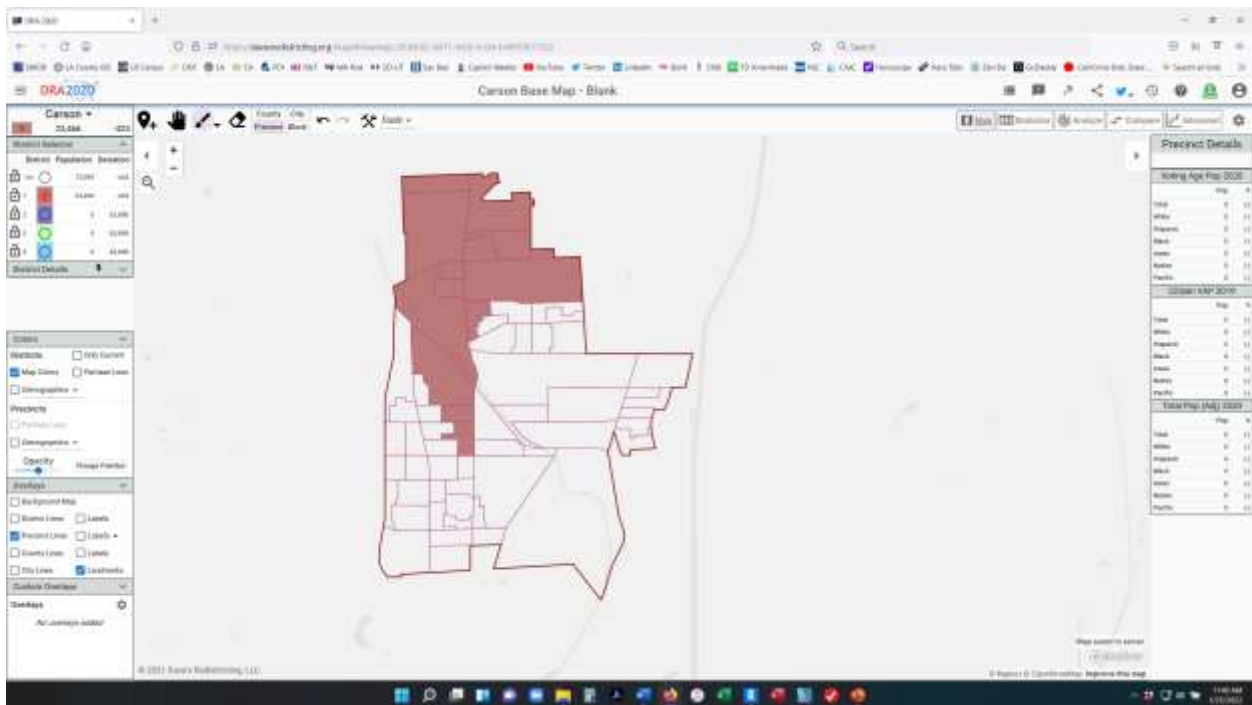
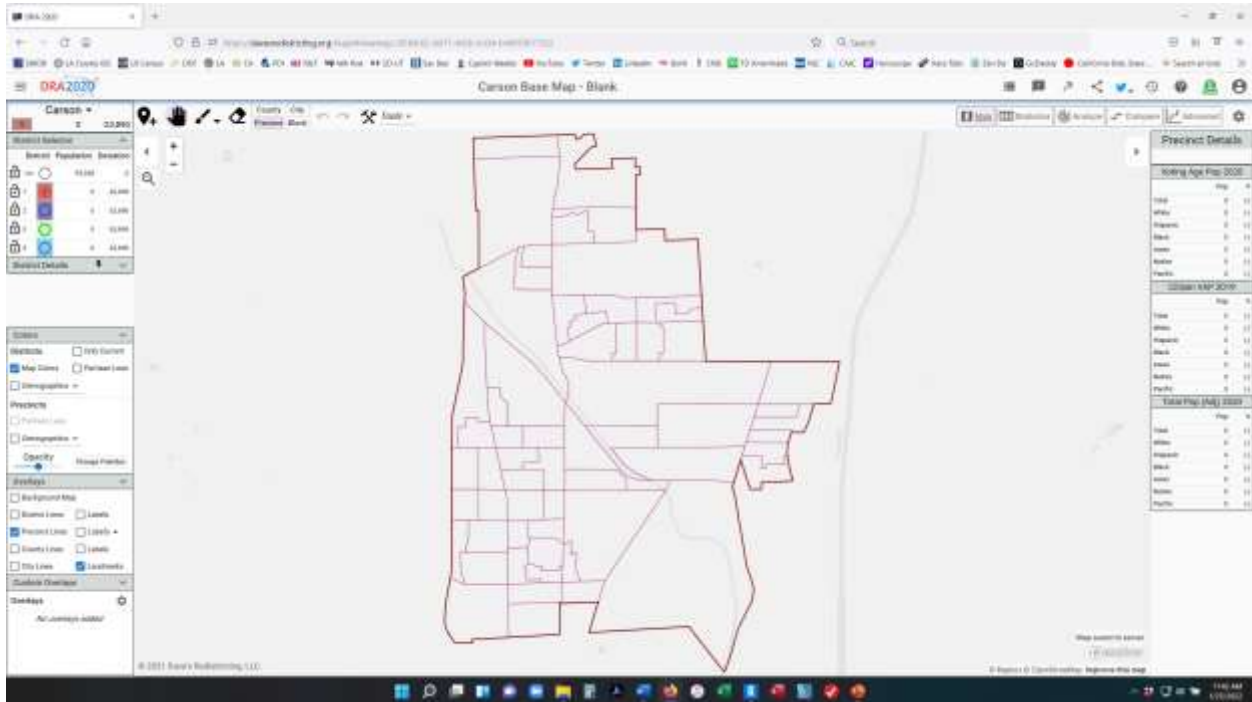
Find Map under My Maps

- 8) Once you've made a duplicate/copy of the Map, you can access the new map under Maps => My Maps button in the top right corner. Click on the Copy to begin drawing your districts.



Creating Districts

- 9) Now you are ready to begin drawing your maps! Use the paint brush tool to select geography to add as part of a district. You can switch districts on the left side of the screen using your pointer to select a different circle in the district list box. The eraser tool is available to remove geography from a district as well.



Statistics Page

10) You can also look at the statistics of the districts you created by clicking on the Statistics page in the top right corner.

ID	Population		Shapes		Demographics (W)							DOWNLOAD
	Total	Adj.			Total	White	Minority	Hispanic	Black	Asian	Native	
00	73,262				36,882	7.6%	88.3%	27.9%	25.2%	22.1%	2.4%	2.5%
1	25,466	-1.7%	●	●	15,238	8.2%	87.7%	22.8%	14.8%	22.9%	2.6%	2.2%
2	0	100.0%		●	0	0.0%	0.0%	0.0%	0.0%	0.0%	0.0%	0.0%
3	0	100.0%		●	0	0.0%	0.0%	0.0%	0.0%	0.0%	0.0%	0.0%
4	0	100.0%		●	0	0.0%	0.0%	0.0%	0.0%	0.0%	0.0%	0.0%
	13,890	0.0%	●	●	79,420	7.9%	87.9%	26.6%	24.7%	22.6%	2.4%	2.4%

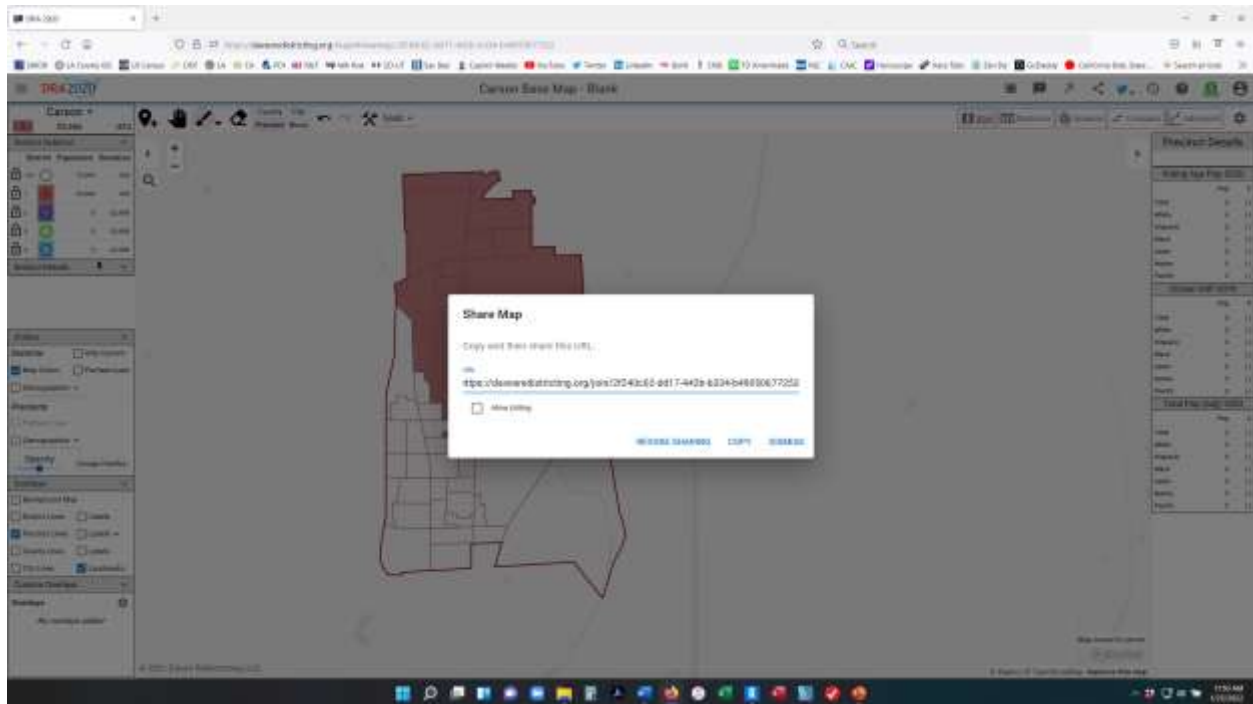
Notes

- Several precincts are unassigned including 06075433041, 06075433042, 86075433043, 06075433044, 06075433065, 86075433062, 06075433063, 06075433221, 86075433222, and 86075433223.
- Districts 2, 3, and 4 are empty.
- There is one majority-minority district.

Submitting Your Map to the City of Carson

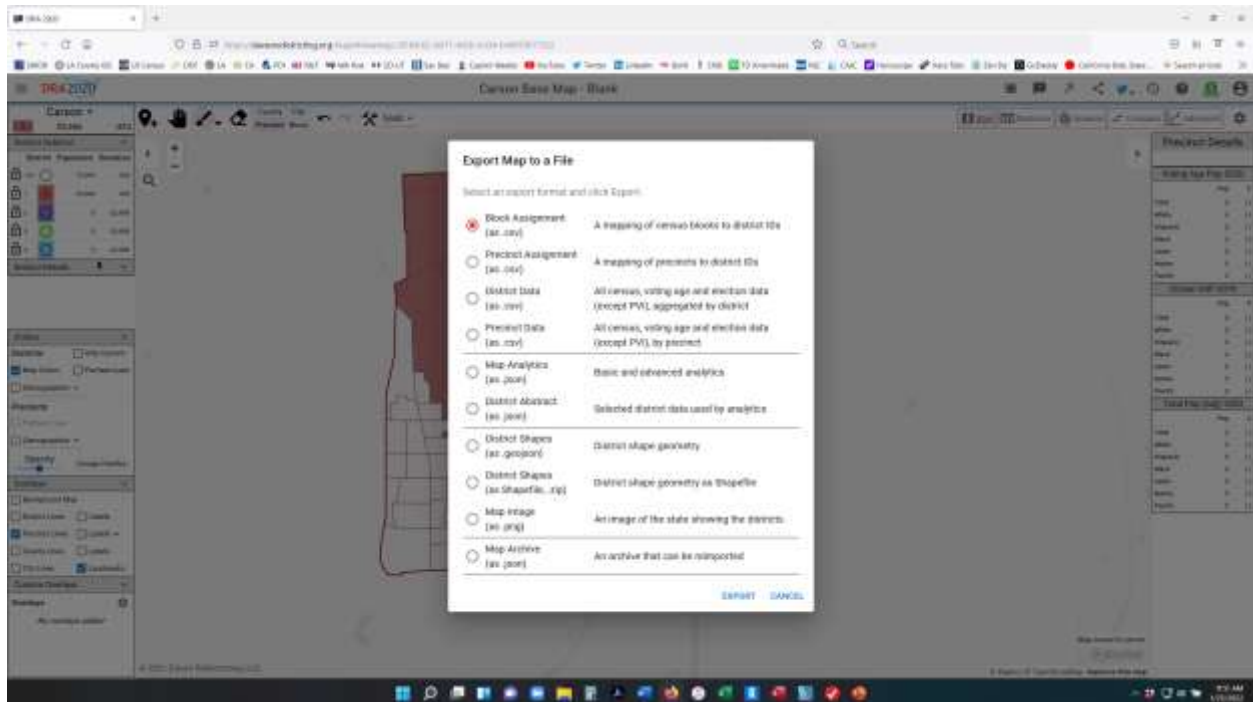
Sharing Your Map

- 11) There are two ways to submit your map to the City of Carson after you finished. The first way is to use the Share Map button on the top left corner to copy the website URL and email the map website to jraymond@carsonca.gov



Exporting Your Map

- 12) You can also export the Block Assignment file to your computer and send the file to redistricting.lausd@lacity.org The Block Assignment file creates a spreadsheet which assigns every census block used in the creation of the map with a District Number which can easily be imported into most GIS software programs.



Getting Started in DRA 2020



Dave Bradlee

Follow



May 8, 2020 · 4 min read

☰ DRA 2020 LOG IN SIGN UP Donate

Welcome to Dave's Redistricting

Empowering Citizens to Advocate for Fair and Transparent Redistricting

Create, Analyze and Share District Maps with DRA 2020

PICK A STATE

LEARN MORE

Click on the map to go to a state page. Map created with mapchart.net ©

In 2021 every state will do redistricting. We believe in fairness and transparency in redistricting, and toward that goal we offer **DRA 2020**, a web application that lets you create, view and analyze congressional and legislative district maps. This article will help you get started.

Sign Up

First, you need to sign up with your email and a password. By default your email name (without the host) will be your username, but you can change that later if you want. Your email will not be visible to others, but your username will be if you publish any maps.

After you sign up, you'll be logged in automatically. The Navigation control (upper left corner) is where you can change your profile, navigate, and log out.

My Maps

Whenever you log in, you'll be brought to **My Maps**. (If you are on the **Home Page**, click **Maps** to take you there.) If you've just signed up, this will naturally be empty, but click on **My Maps** and you can navigate to **Published**, a list of maps others have published, or **Official**, a list of current congressional and legislative district maps for every state. Select one of those maps and click **View** to see it.

Home Page

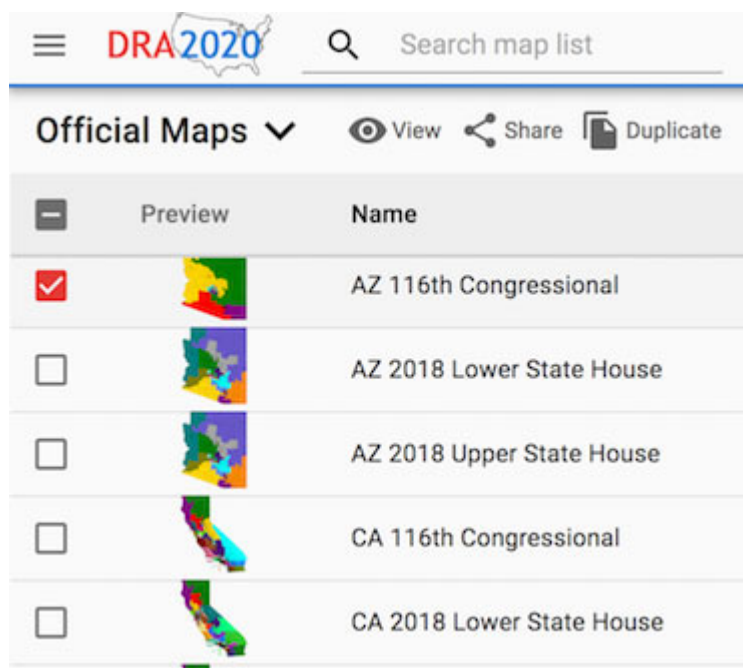
Click the logo to navigate to the **Home Page**. You can click a state on the map or use **Pick a State** to get to a state page. The state page shows the official congressional map (except for states with only 1 district) and legislative map(s). Click on one to view that map. There are also links to additional information about redistricting in that state. Every state has a different process. The **Home Page** also has links to articles like this one.

Create A Map

There are two ways to create your own map: start from an existing map or create a new blank map.

To start from an existing map, for example from **Official**, select a map (using the checkbox), and then click the **Duplicate** icon. This create a copy of that map and takes you to **My Maps**, where the copy should be on the top of the list, ready for you to edit. If

you are already viewing an official map, or other map in view-only mode, you can duplicate it from there as well.



To create a new blank map, click **New Map**, which brings up **Map Settings**.

Map Settings ^

Name AZ 123

State Arizona ▾

Shapes 2010 Precincts ▾

District Count 9

Districts Have Equal Population

Label	Color	Target Pop
1	Blue	710224
2	Green	710224
3	Purple	710224
4	Red	710224
5	Yellow	710224
6	Teal	710224
7	Brown	710224
8	Light Purple	710224
9	Cyan	710224

When you pick a state, we'll default the district count to the state's current number of congressional seats and set the target population for each seat. Change them as you wish.

Shapes are the building blocks you'll use to build your district map. For new maps, only the 2010 precincts, released with the 2010 Census, are available. Next year, 2020 precincts will be available, too.

Once you pick a state, you'll see the **Data Selector** open below **Map Settings**.

Paint Map

If this is your first map, (see the tour from **Help**.) Then paint the district you're painting. The controls when and what to complete your map.

Data Selector

Primary Datasets
 Select primary datasets, one from each group, which will be used by District Statistics, Demographics Colors and Partisan Lean Colors.

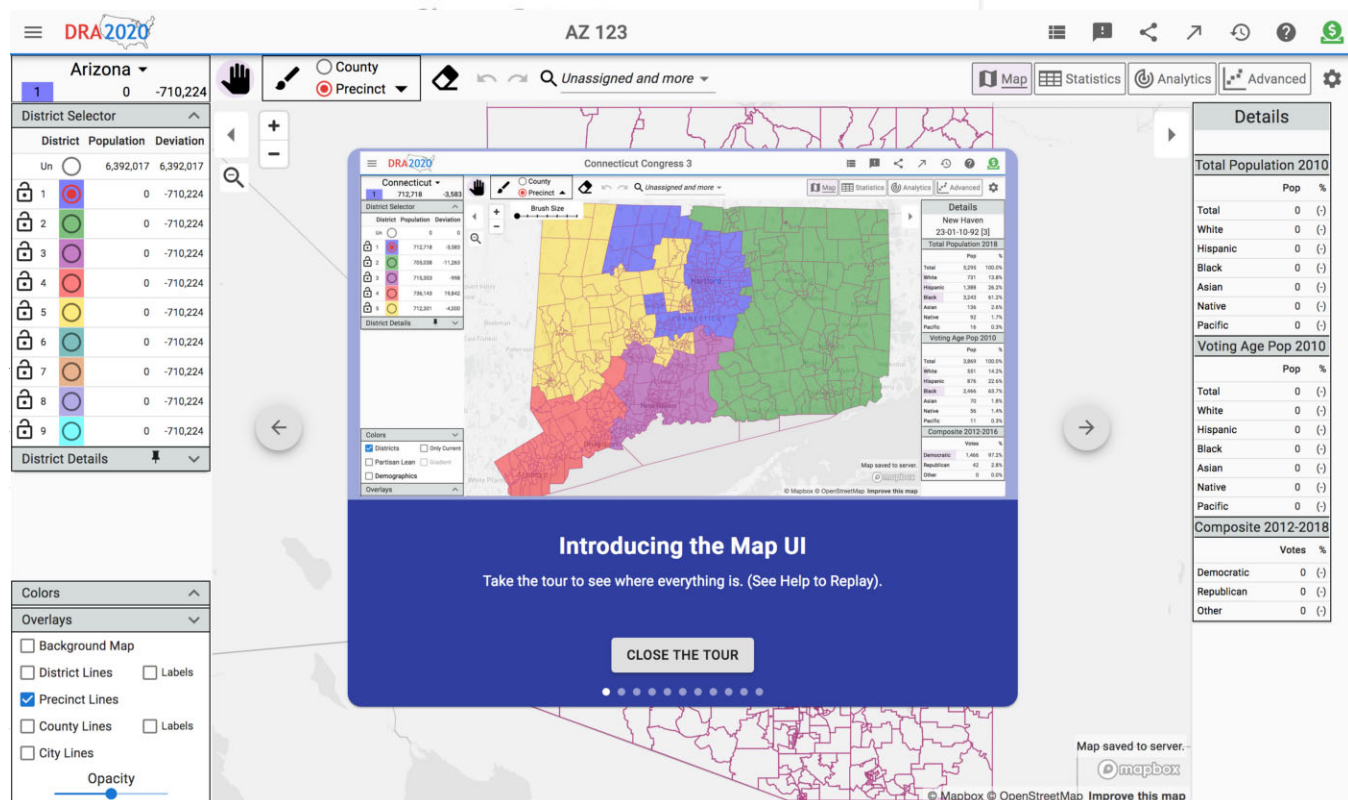
Census Total Population 2010 ▾

Voting Age Voting Age Pop 2010 ▾

Election Composite 2012-2018 ▾

Display or Hide Datasets
 Show or hide datasets in the Details panels. These choices are for **viewing only** and are not used by District Statistics, Demographics Colors or Partisan Lean Colors.

an always get back to dataset details, control side of the top bar yze and help you



Your map is automatically saved in the cloud and ready for you when you come back. For a deeper dive into creating maps see [Building Your District Map](#). We hope you find

our app useful and effective in getting prepared for the next round of redistricting in 2021.

We hope to hear from you at feedback@davesredistricting.org.

Cheers!

[Redistricting](#) [Gerrymandering](#) [Census](#)

[About](#) [Write](#) [Help](#) [Legal](#)

Get the Medium app



Building Your District Map



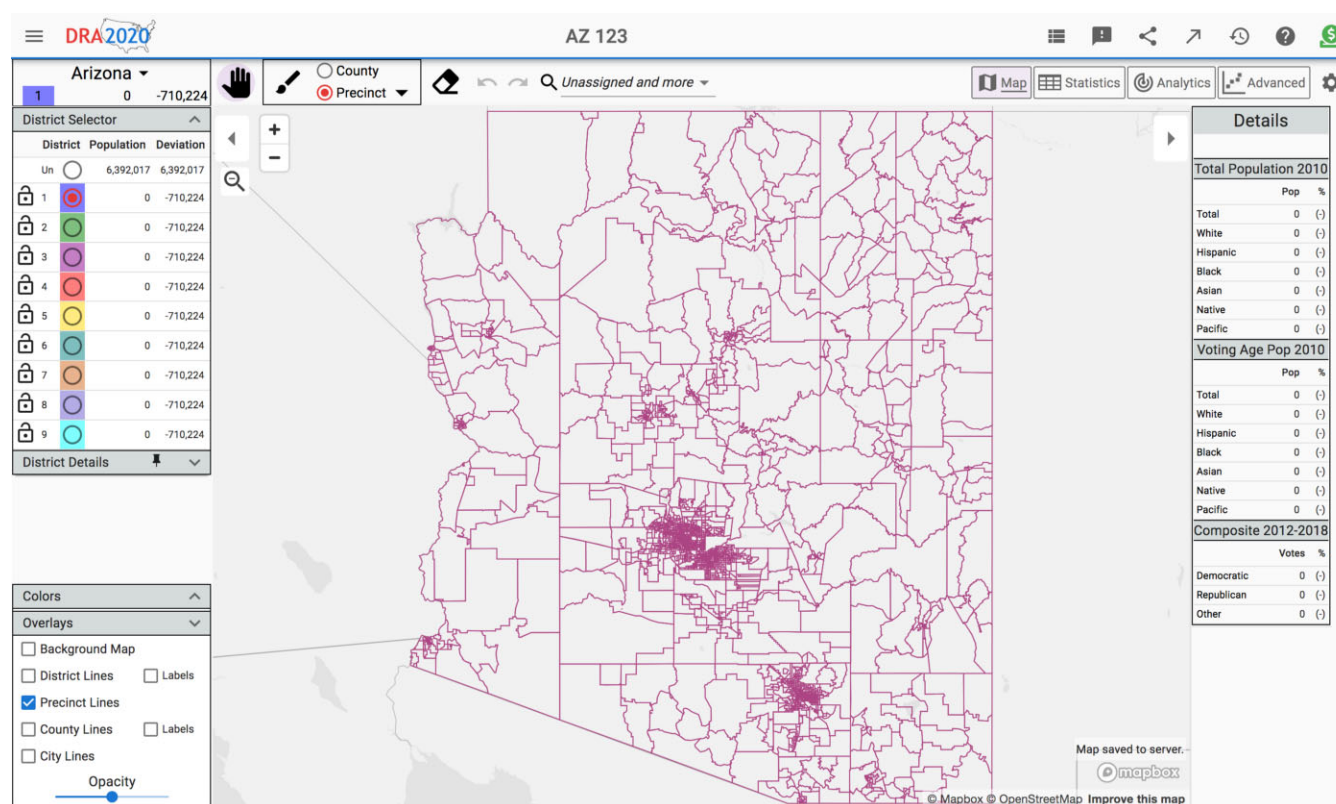
Dave Bradlee

Follow



May 8, 2020 · 4 min read

This article will walk you through building a state district map from a blank map. You've already selected a state and number of districts. Now you're looking at something like this.



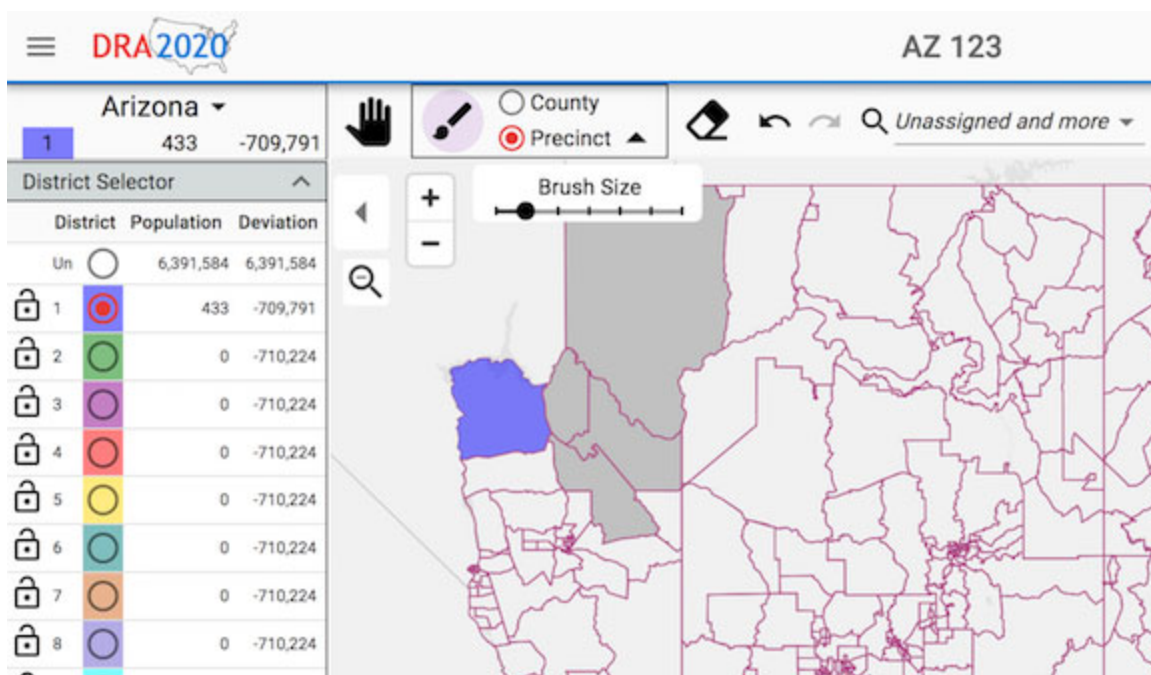
Your goal, at the very least, is to assign all the precincts to districts so that each district has about the same population, and to make sure each district is contiguous (all precincts are connected). As you work with your map, it will always be saved in the cloud.

Painting

You assign precincts to districts by *painting* the map.

Use the radio buttons in the **District Selector** (left panel) to select which district to paint.

Click the **Paint Brush** (top bar) to toggle to **Paint Mode**. You can paint counties or precincts, and you can adjust the brush size for painting precincts. You can also double-click on the map top toggle **Paint Mode**. Click the **Eraser** to erase and **Pan** (hand) to exit **Paint Mode**.

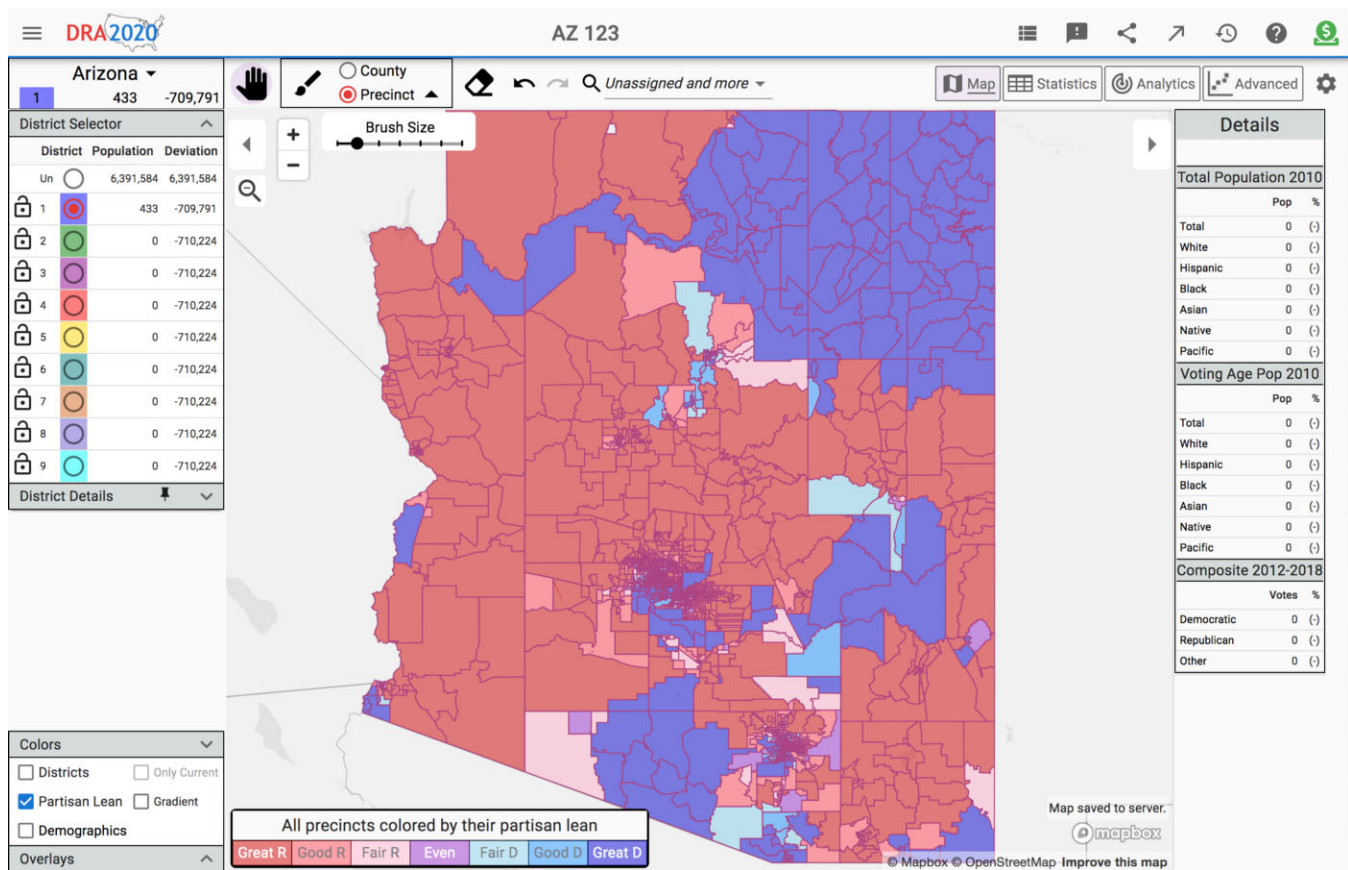


In **Paint Mode**, click on the map to assign precincts or counties to the selected district. As you move the mouse over the map, the shaded area is what will be painted when you click. You can hold the left mouse button down and sweep to paint.

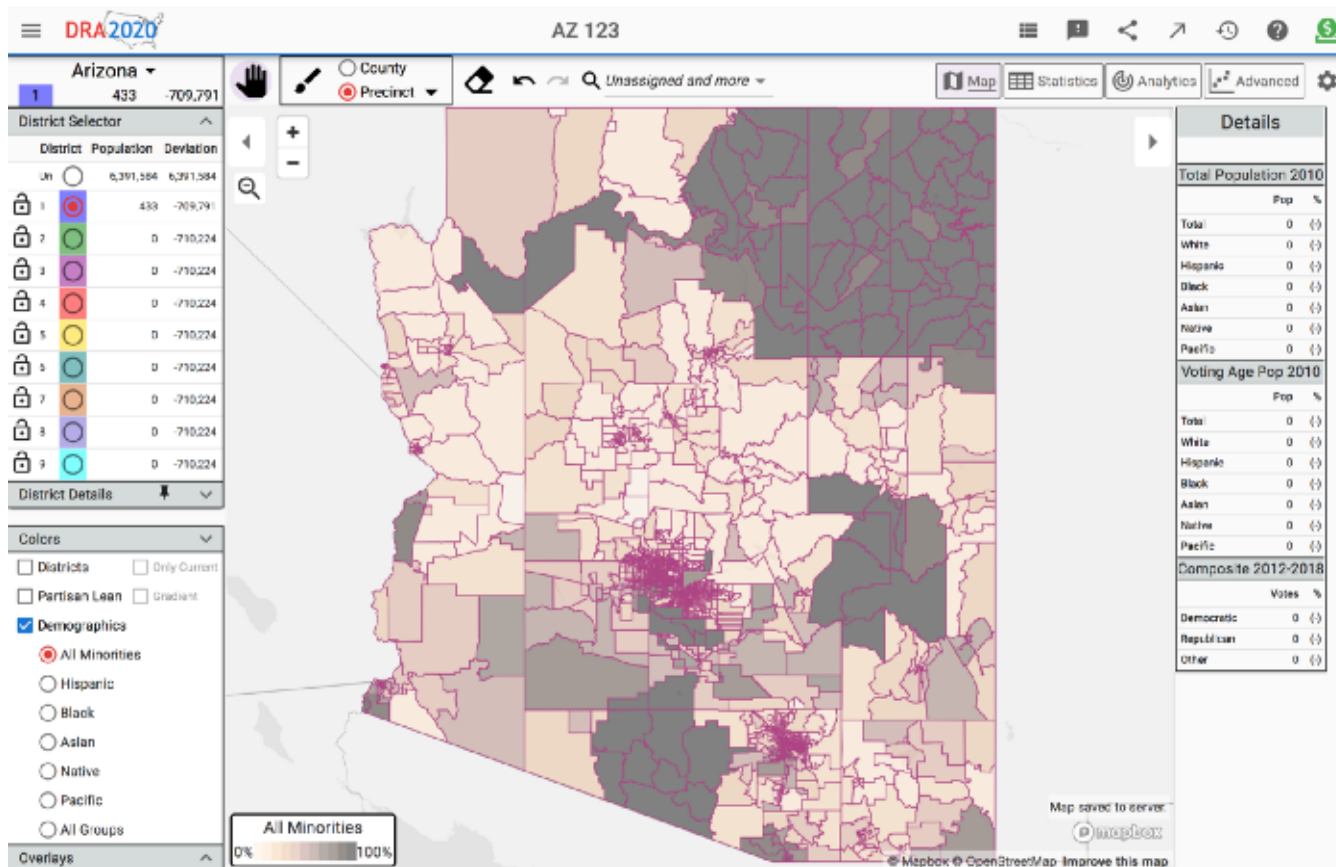
You can also drag out a box and paint everything in it. Hold **Ctrl** (Windows) or **Command** (Mac) down, then hold the left mouse button down, drag out a box and release the mouse button.

Controls

Various controls and tools can help you as you decide how to paint the map. The **Colors** section (lower left panel) let's you view the map colored by **Partisan Lean** or various demographics. The following image shows all precincts colored by **Partisan Lean**, using discreet bands. A gradient color option is available if you prefer.



The next image shows the map colored by an **All Minorities** gradient. If you check the **Districts** checkbox together with **Partisan Lean** or one of the demographics choices, precincts that are assigned to a district will show as that district's color; only unassigned precincts will show as the **Partisan Lean** or demographic color.



The **Details** panel (right panel) shows the dataset details of the precinct or county your mouse is hovering over. In the above image the data for precinct *Solomon 1* is shown.

The **Overlays** section in the left panel has options to show the background map, county lines, district labels and more, and an **Opacity** slider. Your strategy as you paint your map can make a big difference.

- Think about what your goals are. Are you trying to keep certain demographic groups together? Are you trying to make a partisan map? Are you going for compactness or competitiveness or proportionality? Do you want to minimize changes from the current map?
- Painting counties can be a good place to start, especially for sparsely populated areas. You can always erase or paint over previously painted precincts. Use the precinct's brush size to paint faster.
- If you have specific groups, such as minorities, that you need to keep together in a district, it's a good idea to start there.

- Having a rough idea of where your districts should be centered can help.
- Once you start painting, don't try to make the first district perfect without painting other districts. Instead, make a rough cut of each and then refine; you'll always have to tinker around the edges to meet your target population goals.

End Game

As you get to the last few precincts, you'll likely be looking at the population and deviation (from the target population) columns, tinkering to get as close to the target as possible. Sometimes it's difficult to locate a few small precincts that didn't get painted, or there may be mis-painted precincts that make your districts non-contiguous.

The tools **Find Unassigned Precincts**, which will find and zoom to unassigned precincts, and **Find Non-contiguous**, which will find and zoom to disconnected portions of each district, will help you find those problem areas.

District Selector

District	Population	Deviation
Un	0	0
1	728,427	18,203
2	708,005	-2,219
3	714,351	4,127
4	698,698	-11,526
5	708,421	-1,803
6	719,894	9,670
7	708,531	-1,693
8	698,742	-11,482
9	706,948	-3,276

Details

Total Population 2010		
	Pop	%
Total	0	()
White	0	()
Hispanic	0	()
Black	0	()
Asian	0	()
Native	0	()
Pacific	0	()
Voting Age Pop 2010		
	Pop	%
Total	0	()
White	0	()
Hispanic	0	()
Black	0	()
Asian	0	()
Native	0	()
Pacific	0	()
Composite 2012-2018		
	Votes	%
Democratic	0	()
Republican	0	()
Other	0	()

Click **Statistics** to see information about population, partisanship, demographics and more, for the districts you've created. This can help you get closer to your goals for the map. In the example below, you can see that four districts have unequal population and two are not contiguous. In addition, three districts have over 40% minority population.

AZ 9

ID	Population		Shapes		Partisan Lean		Demographics (VAP)							
	Total	+/-			Dem	Rep	Total	White	Minority	Hispanic	Black	Asian	Native	Pacific
Un	0				0.00%	0.00%	0	0.00%	0.00%	0.00%	0.00%	0.00%	0.00%	0.00%
1	728,427	2.56%			48.80%	51.20%	540,345	55.71%	44.29%	18.51%	2.77%	1.90%	22.08%	0.40%
2	708,005	-0.31%			51.01%	48.99%	556,734	69.16%	30.84%	21.76%	4.35%	3.61%	2.11%	0.35%
3	714,351	0.58%			62.27%	37.73%	500,080	34.64%	65.36%	55.14%	4.71%	2.67%	4.87%	0.29%
4	698,698	-1.52%			30.25%	69.75%	543,778	81.06%	18.94%	13.92%	1.63%	1.50%	2.36%	0.27%
5	708,421	-0.25%			37.36%	62.64%	511,297	76.81%	23.19%	14.03%	3.28%	4.81%	1.47%	0.37%
6	719,894	1.36%			42.11%	57.89%	562,013	79.01%	20.99%	12.33%	2.85%	4.12%	2.12%	0.25%
7	708,531	-0.24%			72.75%	27.25%	473,321	26.69%	73.31%	58.15%	10.29%	3.34%	3.75%	0.34%
8	698,742	-1.52%			38.12%	61.88%	527,908	76.07%	23.93%	15.14%	4.16%	3.78%	1.39%	0.29%
9	706,948	-0.46%			55.67%	44.33%	547,527	64.51%	35.49%	22.34%	5.58%	5.15%	3.37%	0.43%
	710,224	4.19%			46.48%	53.52%	529,223	63.36%	36.64%	25.01%	4.32%	3.43%	4.86%	0.33%

Notes

- Districts 1 and 3 may not be contiguous.
- The 4.19% population deviation is greater than the 0.75% threshold tolerated by the courts.
- Four districts lean Republican, three lean Democratic, and two fall in the 45–55% competitive range.
- There are two majority-minority districts.
- For more information on redistricting in Arizona, see Brennan Center for Justice: [Arizona Guide to Redistricting](#), and Princeton Gerrymandering Project: [Arizona Redistricting Reform](#).

Click **Analytics** to see your districts measured along five dimensions. [This article](#) has more information on those measures.

Your map is always saved in the cloud. When you're done, you can **Publish** it, so everyone on **DRA 2020** can see it. You can **Share** it with friends or colleagues as well.

Good luck!

Redistricting Gerrymandering

[About](#) [Write](#) [Help](#) [Legal](#)

Get the Medium app



Building Your District Map



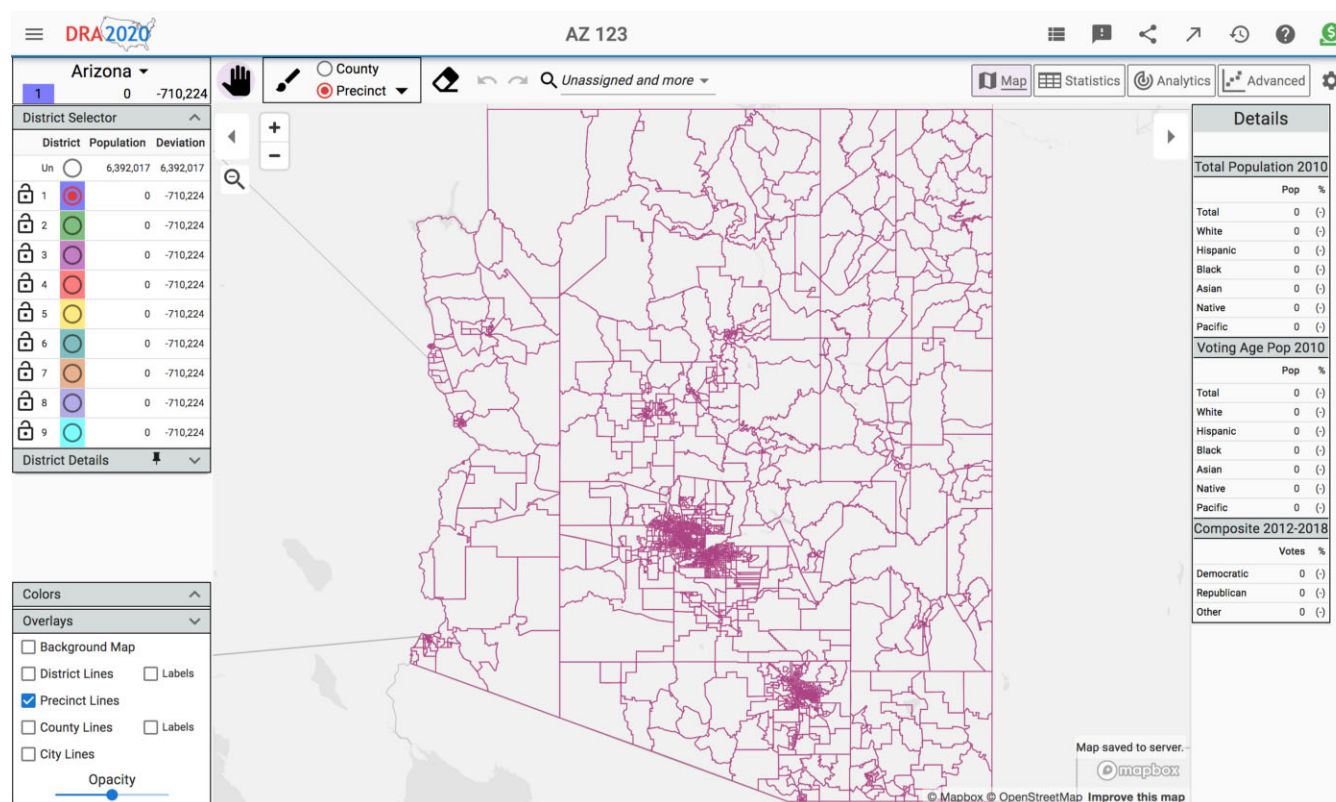
Dave Bradlee

Follow



May 8, 2020 · 4 min read

This article will walk you through building a state district map from a blank map. You've already selected a state and number of districts. Now you're looking at something like this.



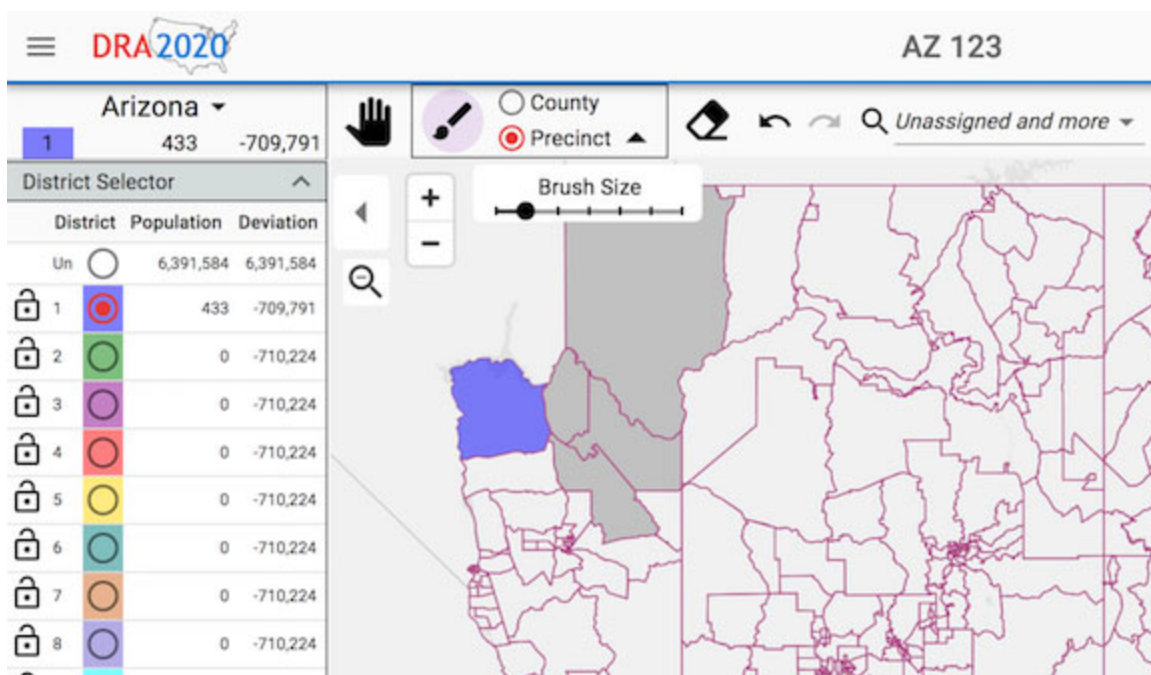
Your goal, at the very least, is to assign all the precincts to districts so that each district has about the same population, and to make sure each district is contiguous (all precincts are connected). As you work with your map, it will always be saved in the cloud.

Painting

You assign precincts to districts by *painting* the map.

Use the radio buttons in the **District Selector** (left panel) to select which district to paint.

Click the **Paint Brush** (top bar) to toggle to **Paint Mode**. You can paint counties or precincts, and you can adjust the brush size for painting precincts. You can also double-click on the map top toggle **Paint Mode**. Click the **Eraser** to erase and **Pan** (hand) to exit **Paint Mode**.

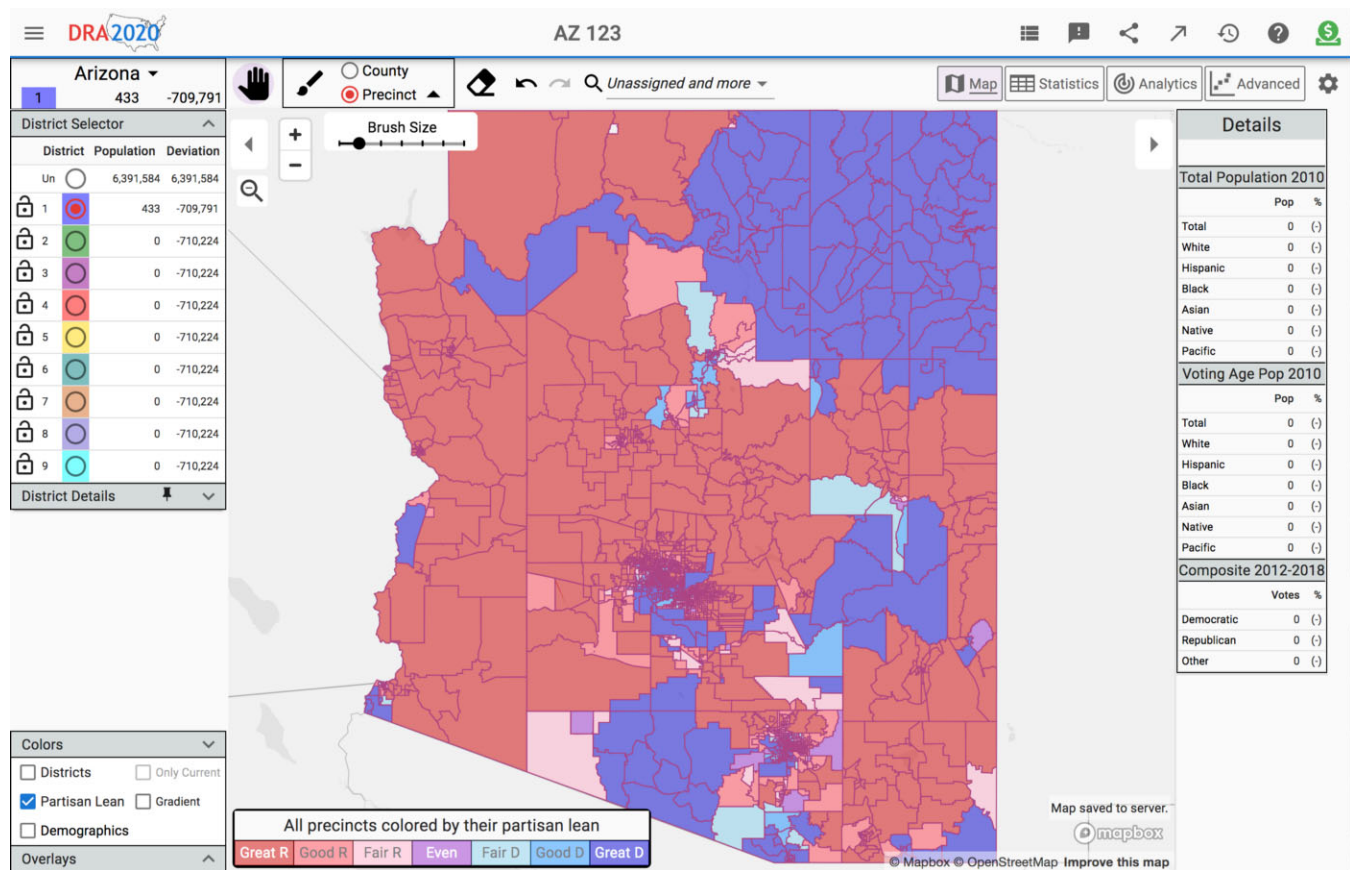


In **Paint Mode**, click on the map to assign precincts or counties to the selected district. As you move the mouse over the map, the shaded area is what will be painted when you click. You can hold the left mouse button down and sweep to paint.

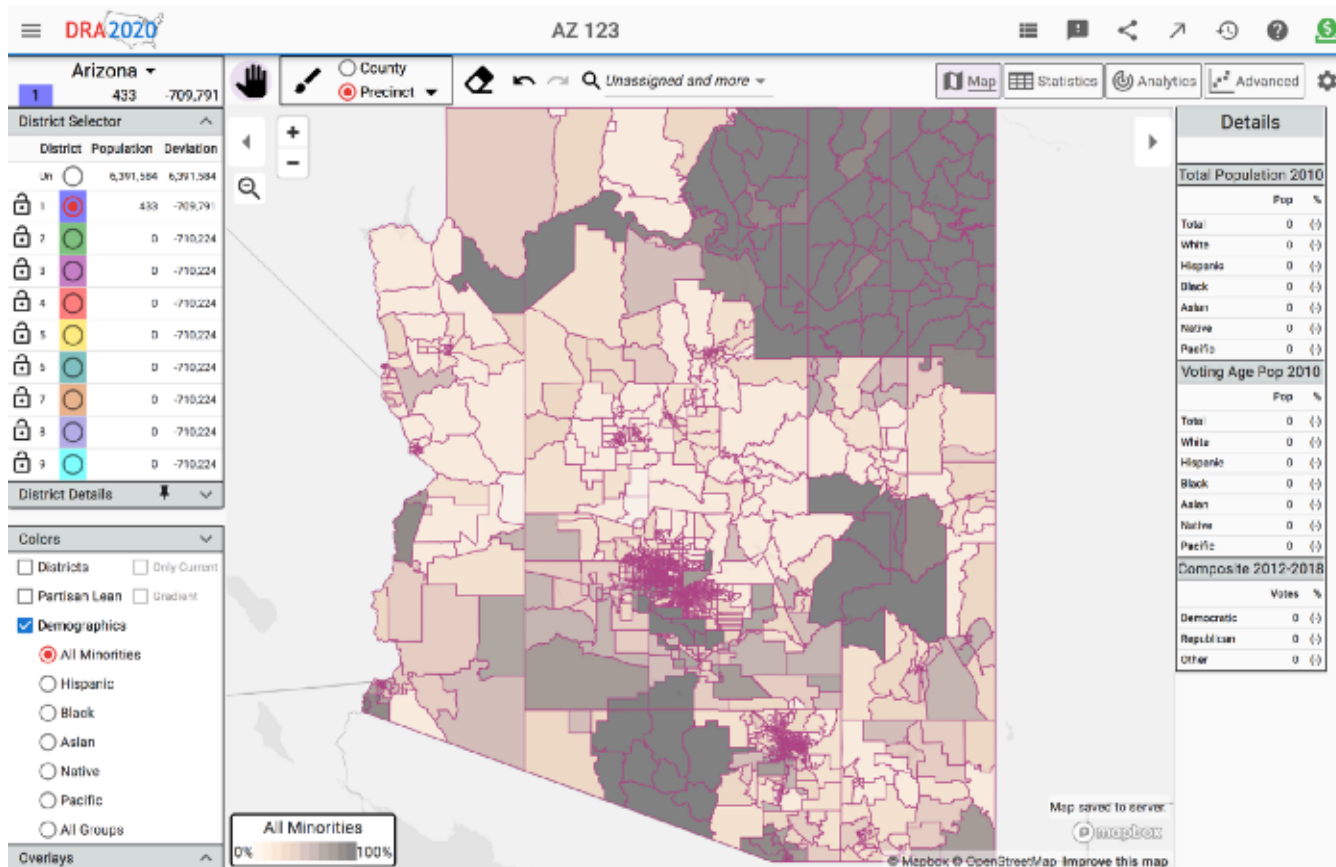
You can also drag out a box and paint everything in it. Hold **Ctrl** (Windows) or **Command** (Mac) down, then hold the left mouse button down, drag out a box and release the mouse button.

Controls

Various controls and tools can help you as you decide how to paint the map. The **Colors** section (lower left panel) let's you view the map colored by **Partisan Lean** or various demographics. The following image shows all precincts colored by **Partisan Lean**, using discreet bands. A gradient color option is available if you prefer.



The next image shows the map colored by an **All Minorities** gradient. If you check the **Districts** checkbox together with **Partisan Lean** or one of the demographics choices, precincts that are assigned to a district will show as that district's color; only unassigned precincts will show as the **Partisan Lean** or demographic color.



The **Details** panel (right panel) shows the dataset details of the precinct or county your mouse is hovering over. In the above image the data for precinct *Solomon 1* is shown.

The **Overlays** section in the left panel has options to show the background map, county lines, district labels and more, and an **Opacity** slider. Your strategy as you paint your map can make a big difference.

- Think about what your goals are. Are you trying to keep certain demographic groups together? Are you trying to make a partisan map? Are you going for compactness or competitiveness or proportionality? Do you want to minimize changes from the current map?
- Painting counties can be a good place to start, especially for sparsely populated areas. You can always erase or paint over previously painted precincts. Use the precinct's brush size to paint faster.
- If you have specific groups, such as minorities, that you need to keep together in a district, it's a good idea to start there.

- Having a rough idea of where your districts should be centered can help.
- Once you start painting, don't try to make the first district perfect without painting other districts. Instead, make a rough cut of each and then refine; you'll always have to tinker around the edges to meet your target population goals.

End Game

As you get to the last few precincts, you'll likely be looking at the population and deviation (from the target population) columns, tinkering to get as close to the target as possible. Sometimes it's difficult to locate a few small precincts that didn't get painted, or there may be mis-painted precincts that make your districts non-contiguous.

The tools **Find Unassigned Precincts**, which will find and zoom to unassigned precincts, and **Find Non-contiguous**, which will find and zoom to disconnected portions of each district, will help you find those problem areas.

District Selector

District	Population	Deviation
Un	0	0
1	728,427	18,203
2	708,005	-2,219
3	714,351	4,127
4	698,698	-11,526
5	708,421	-1,803
6	719,894	9,670
7	708,531	-1,693
8	698,742	-11,482
9	706,948	-3,276

Details

Total Population 2010		
	Pop	%
Total	0	()
White	0	()
Hispanic	0	()
Black	0	()
Asian	0	()
Native	0	()
Pacific	0	()

Voting Age Pop 2010		
	Pop	%
Total	0	()
White	0	()
Hispanic	0	()
Black	0	()
Asian	0	()
Native	0	()
Pacific	0	()

Composite 2012-2018		
	Votes	%
Democratic	0	()
Republican	0	()
Other	0	()

Click **Statistics** to see information about population, partisanship, demographics and more, for the districts you've created. This can help you get closer to your goals for the map. In the example below, you can see that four districts have unequal population and two are not contiguous. In addition, three districts have over 40% minority population.

AZ 9

ID	Population		Shapes		Partisan Lean		Demographics (VAP)							
	Total	+/-			Dem	Rep	Total	White	Minority	Hispanic	Black	Asian	Native	Pacific
Un	0				0.00%	0.00%	0	0.00%	0.00%	0.00%	0.00%	0.00%	0.00%	0.00%
1	728,427	2.56%			48.80%	51.20%	540,345	55.71%	44.29%	18.51%	2.77%	1.90%	22.08%	0.40%
2	708,005	-0.31%			51.01%	48.99%	556,734	69.16%	30.84%	21.76%	4.35%	3.61%	2.11%	0.35%
3	714,351	0.58%			62.27%	37.73%	500,080	34.64%	65.36%	55.14%	4.71%	2.67%	4.87%	0.29%
4	698,698	-1.52%			30.25%	69.75%	543,778	81.06%	18.94%	13.92%	1.63%	1.50%	2.36%	0.27%
5	708,421	-0.25%			37.36%	62.64%	511,297	76.81%	23.19%	14.03%	3.28%	4.81%	1.47%	0.37%
6	719,894	1.36%			42.11%	57.89%	562,013	79.01%	20.99%	12.33%	2.85%	4.12%	2.12%	0.25%
7	708,531	-0.24%			72.75%	27.25%	473,321	26.69%	73.31%	58.15%	10.29%	3.34%	3.75%	0.34%
8	698,742	-1.52%			38.12%	61.88%	527,908	76.07%	23.93%	15.14%	4.16%	3.78%	1.39%	0.29%
9	706,948	-0.46%			55.67%	44.33%	547,527	64.51%	35.49%	22.34%	5.58%	5.15%	3.37%	0.43%
	710,224	4.19%			46.48%	53.52%	529,223	63.36%	36.64%	25.01%	4.32%	3.43%	4.86%	0.33%

Notes

- Districts 1 and 3 may not be contiguous.
- The 4.19% population deviation is greater than the 0.75% threshold tolerated by the courts.
- Four districts lean Republican, three lean Democratic, and two fall in the 45–55% competitive range.
- There are two majority-minority districts.
- For more information on redistricting in Arizona, see Brennan Center for Justice: [Arizona Guide to Redistricting](#), and Princeton Gerrymandering Project: [Arizona Redistricting Reform](#).

Click **Analytics** to see your districts measured along five dimensions. [This article](#) has more information on those measures.

Your map is always saved in the cloud. When you're done, you can **Publish** it, so everyone on **DRA 2020** can see it. You can **Share** it with friends or colleagues as well.

Good luck!

Redistricting Gerrymandering

[About](#) [Write](#) [Help](#) [Legal](#)

Get the Medium app

